

FOR LEASE

Symmes Gate Station



10554 Loveland Madeira Road, Loveland, OH, 45140

DEMOGRAPHICS

Year 2022	1 Mile	3 Mile	5 Mile
Estimated Population	4,936	45,824	118,894
Median Income	\$118,957	\$116,212	\$107,847
Average Income	\$136,001	\$153,516	\$143,333
Daytime Population	1,255	25,476	99,240

PROPERTY HIGHLIGHTS

- Strong Neighborhood Center at Signalized Intersection
- ½ Mile from I-275
- Catch Traffic In and Out of Loveland/Symmes Twp.
- Adjacent to Several New Developments
- Attractive Opportunity for 2nd Generation Medical Space
- Directly Across from Newer Starbucks & Chipolte Outparcel
- Traffic: Loveland Madeira Rd. 21,000 ADT (2019)

Josh M. Rothstein

josh@onsiteretailgroup.com

513.268.4453

[CLICK HERE](#) TO VIEW OUR OTHER LISTINGS!





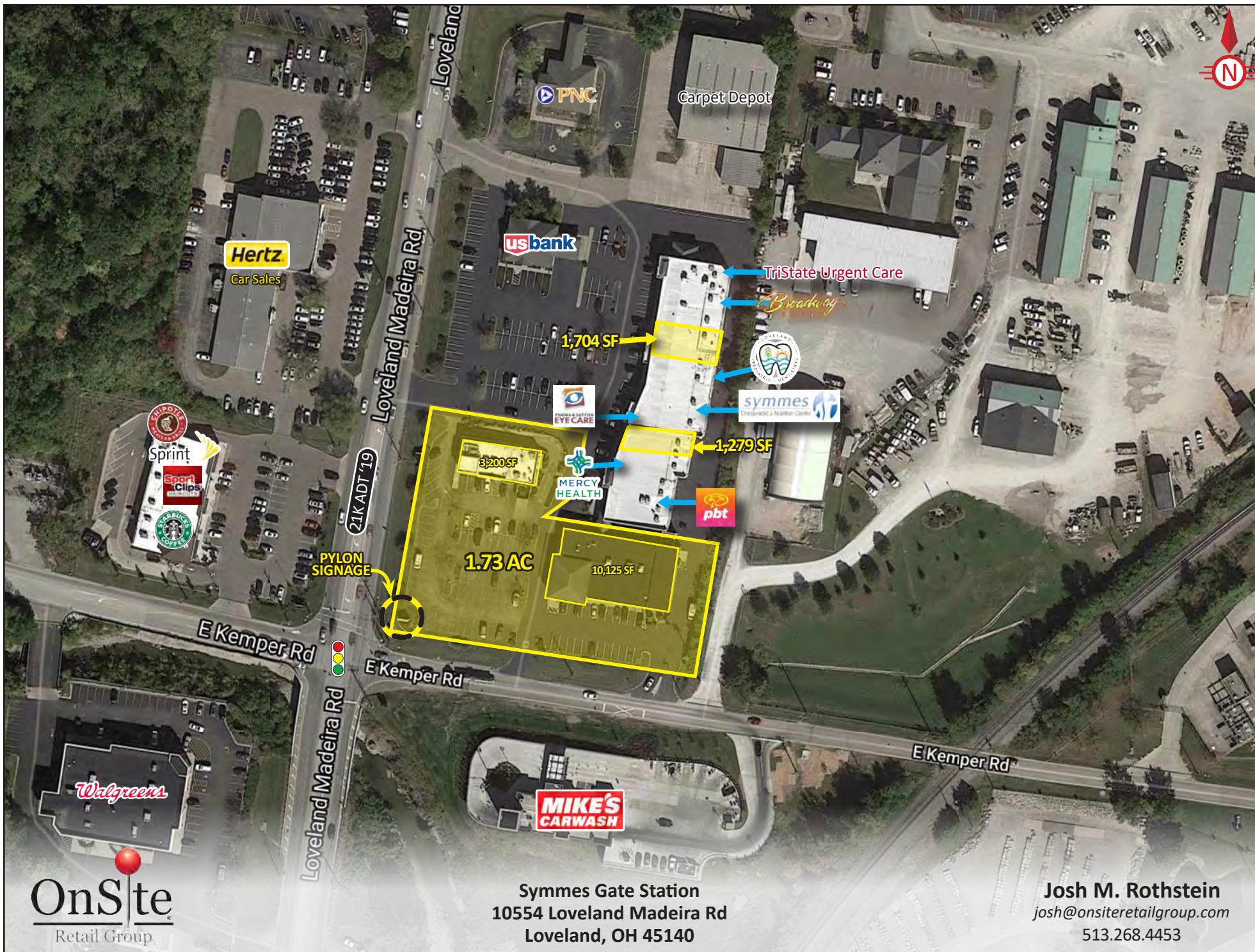
Symmes Gate Station
10554 Loveland Madeira Rd
Loveland, OH 45140

Josh M. Rothstein
josh@onsiteretailgroup.com
513.268.4453



Symmes Gate Station
10554 Loveland Madeira Rd
Loveland, OH 45140

Josh M. Rothstein
josh@onsiteretailgroup.com
513.268.4453



OnSite
Retail Group

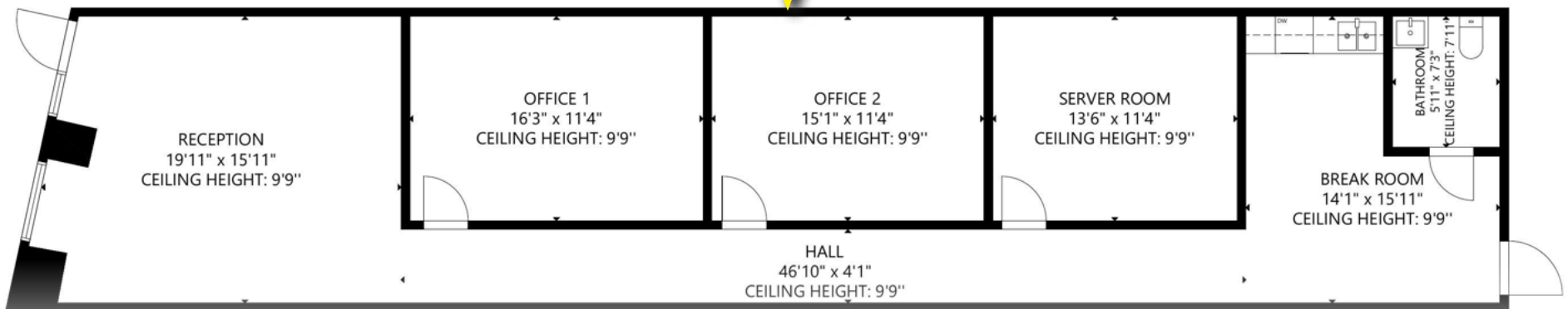
Symmes Gate Station
10554 Loveland Madeira Rd
Loveland, OH 45140

Josh M. Rothstein
josh@onsiteretailgroup.com
513.268.4453

1,704 SF



1,279 SF



Symmes Gate Station
10554 Loveland Madeira Rd
Loveland, OH 45140

Josh M. Rothstein
josh@onsiteretailgroup.com
513.268.4453

Summary Profile

2010-2020 Census, 2022 Estimates with 2027 Projections
Calculated using Weighted Block Centroid from Block Groups

Lat/Lon: 39.251/-84.2955

10554 Loveland Madeira Rd	1 mi	3 mi	5 mi
Loveland, OH 45140	radius	radius	radius
Population			
2022 Estimated Population	4,936	45,824	118,894
2027 Projected Population	4,984	46,232	120,432
2020 Census Population	5,065	46,018	118,095
2010 Census Population	4,741	43,557	110,198
Projected Annual Growth 2022 to 2027	0.2%	0.2%	0.3%
Historical Annual Growth 2010 to 2022	0.3%	0.4%	0.7%
2022 Median Age	39.6	40.3	40.3
Households			
2022 Estimated Households	1,931	17,339	45,852
2027 Projected Households	1,939	17,424	46,568
2020 Census Households	1,967	17,309	45,295
2010 Census Households	1,799	16,286	42,281
Projected Annual Growth 2022 to 2027	-	-	0.3%
Historical Annual Growth 2010 to 2022	0.6%	0.5%	0.7%
Race and Ethnicity			
2022 Estimated White	86.9%	84.7%	82.8%
2022 Estimated Black or African American	4.1%	4.3%	4.4%
2022 Estimated Asian or Pacific Islander	5.1%	6.6%	7.7%
2022 Estimated American Indian or Native Alaskan	-	-	-
2022 Estimated Other Races	3.9%	4.4%	5.0%
2022 Estimated Hispanic	2.8%	3.0%	3.8%
Income			
2022 Estimated Average Household Income	\$136,001	\$153,516	\$143,333
2022 Estimated Median Household Income	\$118,957	\$116,212	\$107,847
2022 Estimated Per Capita Income	\$53,216	\$58,148	\$55,364
Education (Age 25+)			
2022 Estimated Elementary (Grade Level 0 to 8)	1.9%	0.8%	1.0%
2022 Estimated Some High School (Grade Level 9 to 11)	1.6%	1.3%	2.2%
2022 Estimated High School Graduate	16.1%	15.9%	17.1%
2022 Estimated Some College	13.3%	14.5%	14.4%
2022 Estimated Associates Degree Only	5.2%	6.6%	7.0%
2022 Estimated Bachelors Degree Only	35.0%	33.2%	32.6%
2022 Estimated Graduate Degree	26.9%	27.7%	25.7%
Business			
2022 Estimated Total Businesses	206	1,856	6,365
2022 Estimated Total Employees	1,255	25,476	99,240
2022 Estimated Employee Population per Business	6.1	13.7	15.6
2022 Estimated Residential Population per Business	23.9	24.7	18.7